

# NOKIA - Software Platform Passive Optical LAN Command Center (KPCC)

COM. REFERENCE

Develop for Enterprise FX DC

19.03.2019

Data Sheet: 019/053-Com\_POL-Sales

## GENERAL FEATURES

- ☆ Intuitive, feature-rich, Web-based user interface
- ☆ Realistic network views using your floor plans
- ☆ Easy navigation to network elements and their physical locations
- ☆ Predefined service definitions for each usage type
- ☆ Custom service definition and automated provisioning
- ☆ Discovery and automatic activation of new optical line terminals (OLTs)
- ☆ Automatic activation of new ONTs
- ☆ Bulk copy of provisioned ONTs
- ☆ Intuitive alarm views

## BENEFITS

- ☆ Ease of use reduces training costs
- ☆ Provides clear and up-to-date records of network elements and their physical locations
- ☆ User type service definitions for reliable and consistent service provisioning
- ☆ Simplifies network growth with automated ONT discovery and activation
- ☆ Imports existing POL services into KPCC that were configured using command line interface (CLI) or the Nokia Access Management System (KAMS)
- ☆ Streamlines network changes and upgrades with ONT replacement and move tools
- ☆ Verifies your service level agreements (SLAs) using the graphed metrics
- ☆ Simplifies a search for network issues through intuitive troubleshooting tasks

# Nokia POL Command Center

## **System administration**

The Nokia Passive Optical LAN (POL) Command Center (KPCC) is an advanced management solution optimized for performance and usability in enterprise environments. As part of the Nokia POL solution, the Nokia KPCC provides a highly intuitive, simplified environment for configuration, automatic activation, fault reporting, troubleshooting, maintenance and much more.

Passive optical LAN offers increased capacity and low maintenance, power and floor space requirements along with longevity that extends well beyond that of traditional Ethernet networks. These benefits can be fully realized when the proper tools are in place for supporting day-to-day operations. With the Nokia KPCC, system administrators can benefit from the power of fiber with a highly intuitive user interface that eliminates complexity and empowers them with the information that they need, when they need it.

The Nokia KPCC takes our experience gained in managing over 160 million access lines and applies it to the unique needs of enterprise, hospitality, healthcare, sport facilities and the private sector in general. Activation of new services is facilitated with predefined service definitions tailored for specific usage types. Adding new endpoints to the network is vastly simplified with optical network terminal (ONT) automatic activation. If an issue does arise, our advanced troubleshooting and alarm management tools will get you straight to the root of the problem. Networks are getting more complex, but managing them does not need to be, because your network is only as good as your ability to use it.

Model	Capacity	Nr. of	Comp
	Subscribers	OLTs	with
KRO-KPCC	up to 3000	3	KRO-OLTXXFX

## Technical Specification

### Supported functions

- Web user interface

- Localization

- Fault management

- Configuration management:

- Copies ONT service configuration to multiple ONTs

- Replace ONT

- Groups ONTs

- POL metrics, graphing and charts

- Service alignment with a CLI configured network

- POL troubleshooting tools

- Search and filter

- Performance and security management

- Operational support

### Supported network elements

- Nokia OLT POL Type FX (4FX - 8FX - 16FX)

- Line termination (LT) cards supported: KNGLT-x, FKGLT-x

- ONT models: KROG-040P-Q, KROG-240G-A, KROG-240G-C, KROG-080P-P, KROG-010G-A, KROG-040P-P

### Hardware and operating system (OS) platforms

- Nokia KPCC operates based on the client- server model. The application is installed on a physical server machine or VMware and is accessed from the user's machine (client) browser.

- Server requirements:

- RAM: 8GB

- CPU: 4 core

- Hard disk space: 20GB free disk space under root volume and 30GB free disk space under logical volume manager (LVM)

- OS: Red HAT® Enterprise client requirements:

- Chrome, Firefox, Internet Explorer browser support

### Scalability

- Up to 2,000 subscribers

- Up to 3 OLTs

Figure 1. Realistic network view

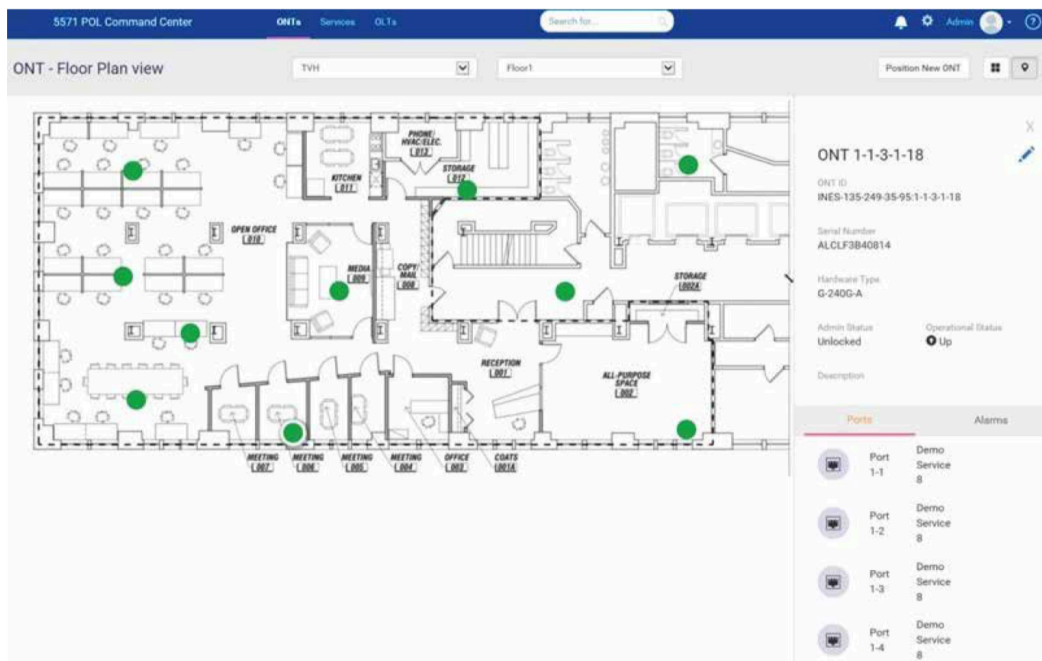
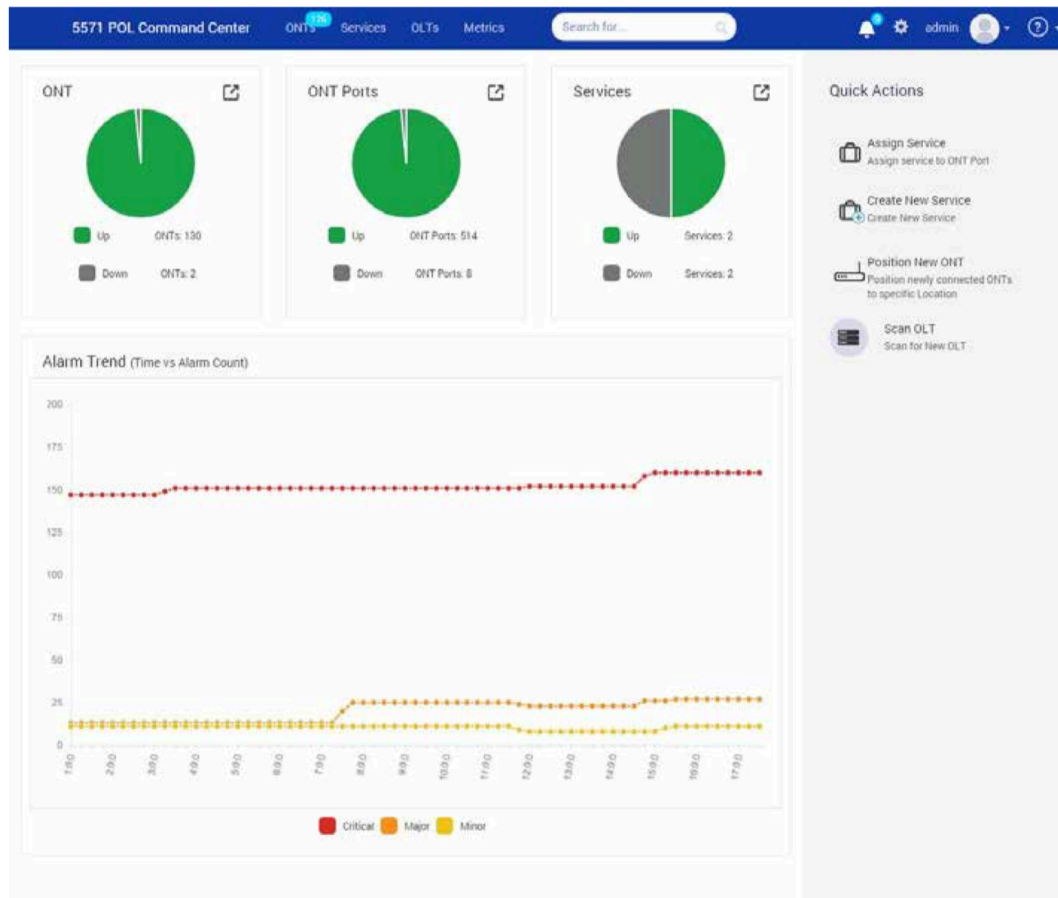


Figure 2. Landing page: key functions at your fingertips



### WARRANTY

This product manufactured for Kronect Comunicatii SRL is warranted to be free from defects from workmanship and components for a period of 2 years from the date of shipment. During this period any defective products shipped prepaid to Kronect will be repaired or replaced at our discretion and returned at no further cost to the customer. Kronect shall not be liable for any consequential or indirect damage of any type or nature, nor for any cost of reinstallation. Any product that has been subject to improper installation, unauthorized alteration, accident or misuse is rendered void of warranty.

Kronect also provides a repair service for products not covered by warranty. Charges will be levied for labor, components, and transportation.

To return a unit for repair contact the Kronect and obtain a Return Material Authorization Number (RMA.)

Be prepared to provide the following information:

1. Product Name
2. Product Model Number
3. Product Serial Number (stick on each products)
4. Your contact person and phone number.
5. Your company name and return address

Package the unit in its original shipping carton or adequate substitute, along with a clear & complete description of the problem or defect. Clearly mark the outside of the carton with the Return Material Authorization Number and send the unit to the address shown below:

### KRONECT COMUNICATII SRL

Str. 1Decembrie Nr.136, City Tunari, District Ilfov, Romania 077180

Phone: +40(212) 529-718

Fax: +40(212) 529-719

E-mail: [comercial@kronect.ro](mailto:comercial@kronect.ro) Internet: <http://www.kronect.ro>

Nokia is a registered trademark of Nokia Corporation. Other product and company names mentioned herein may be trademarks or trade names of their respective owners.